

PNEUMATIC FLOOD BARRIER



- RECESSED INTO THE GROUND
- ACTIVATION BY PRESS-BUTTON OR WATER SENSOR (FULL-AUTOMATIC)

CHARACTERISTICS

- Galvanised steel in combination with stainless steel 304 (*all exterior elements in stand-by position*)
- Fail-safe: power- or pressure loss will activate barrier
- Once activated barrier body is fastened in order to stay upright in event of power- or pressure loss during flood
- Pressure 4 - 10 bar
- Acoustic & optical warning signal
- TÜV approved

PNEUMATIC FLOOD BARRIER

TECHNICAL DATA

Possibilities	
Length	Standard 1 to 5 m
	Optional up to 20 m
Height	Standard 0,5 to 1 m
	Optional to 1,8 m



PNEUMATIC FLOOD BARRIER

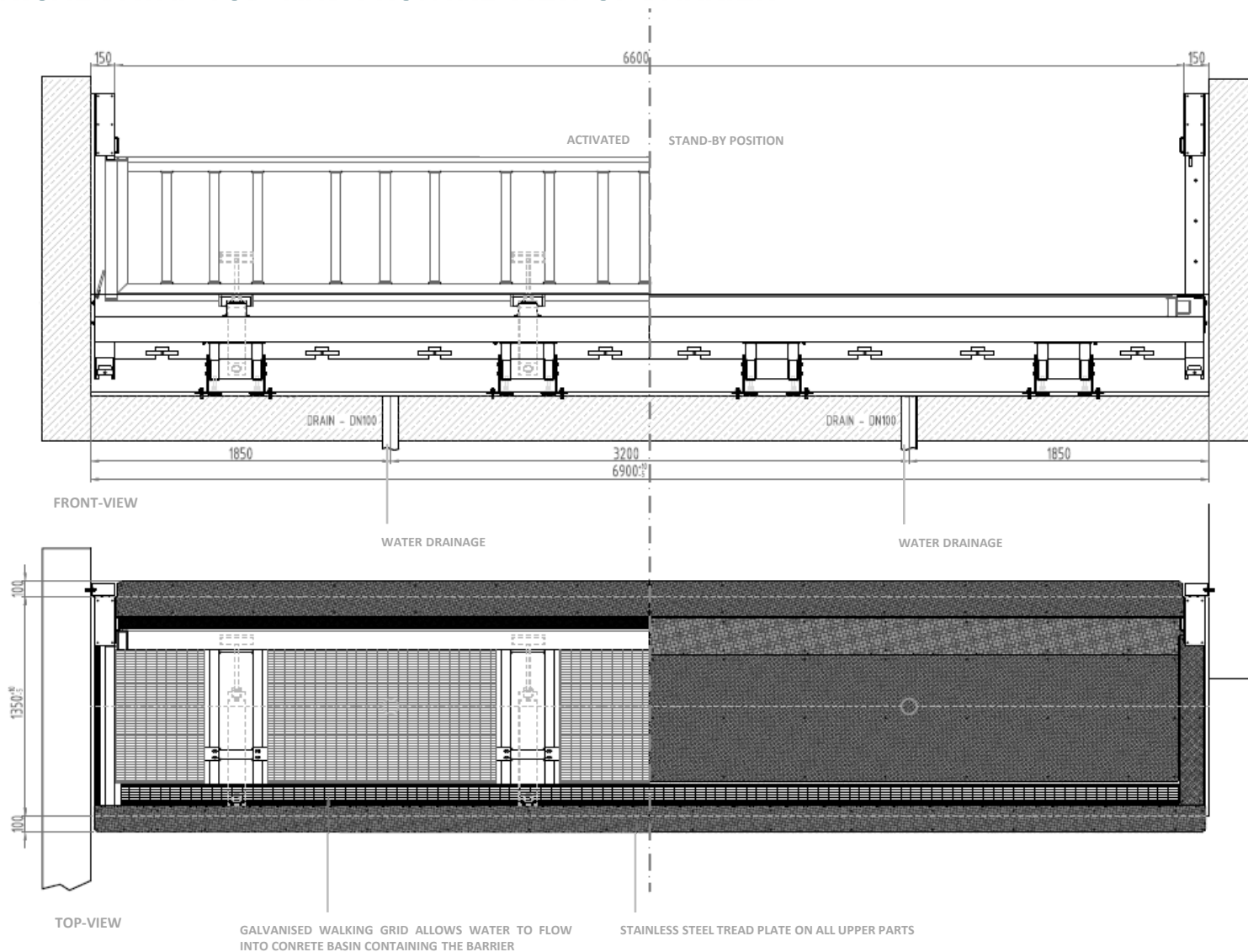


PNEUMATIC FLOOD BARRIER



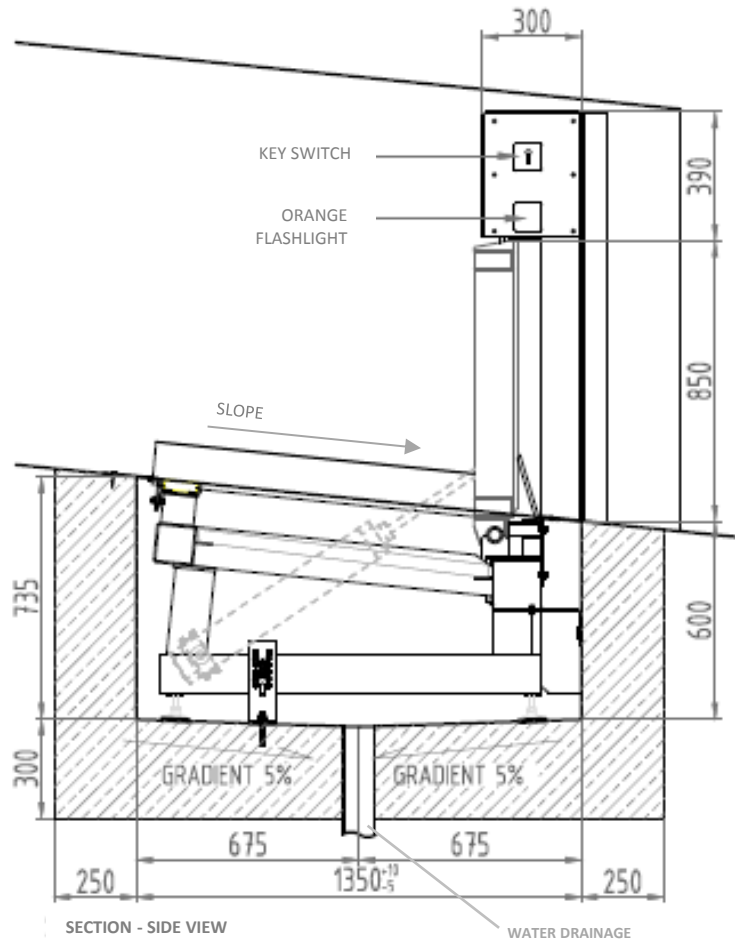
PNEUMATIC FLOOD BARRIER

TECHNICAL DATA: TOP- AND FRONTAL VIEW OF BARRIER



PNEUMATIC FLOOD BARRIER

TECHNICAL DATA: SIDE VIEW OF BARRIER (IN SLOPE)



SECTION - SIDE VIEW
(example of barrier in slope)

PNEUMATIC FLOOD BARRIER

TECHNICAL DATA

Dimensions	
L : total length	$L = \text{clear width wall to wall} + 350 \text{ [mm]}$
B : total width	$B = H + 250 \text{ [mm]}$
D : total depth	$D = 0,65 \times H \text{ [mm]}$
Energy	
Compressed air	$P = 8 \text{ [bar]}$
	Minimum 30 l/min. per system
Electricity	230 [VAC] 10 [A]



CONCRETE FOUNDATION
TO HOLD BARRIER

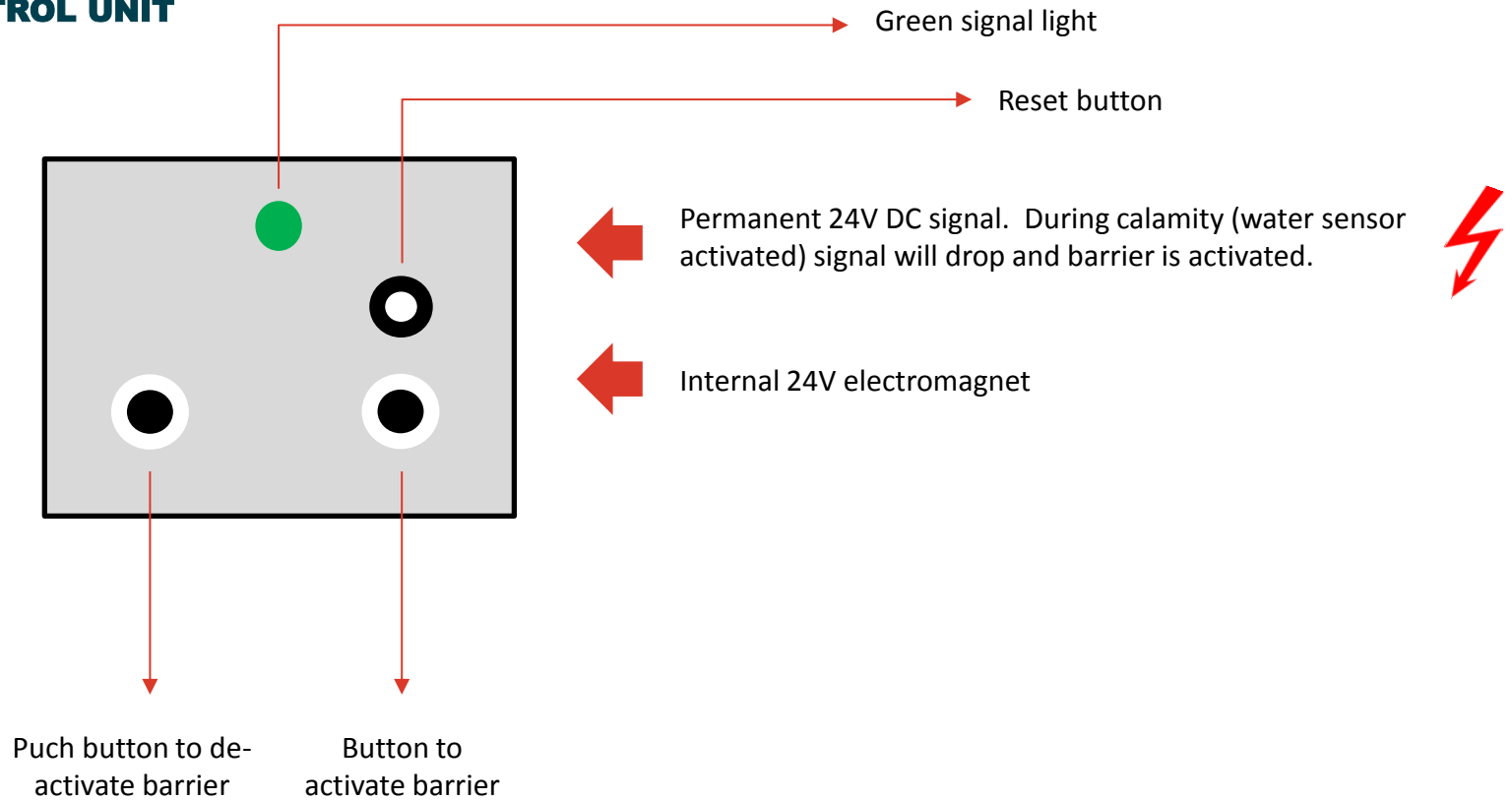
PNEUMATIC FLOOD BARRIER - INSTALLATION



PNEUMATIC FLOOD BARRIER

TECHNICAL DATA

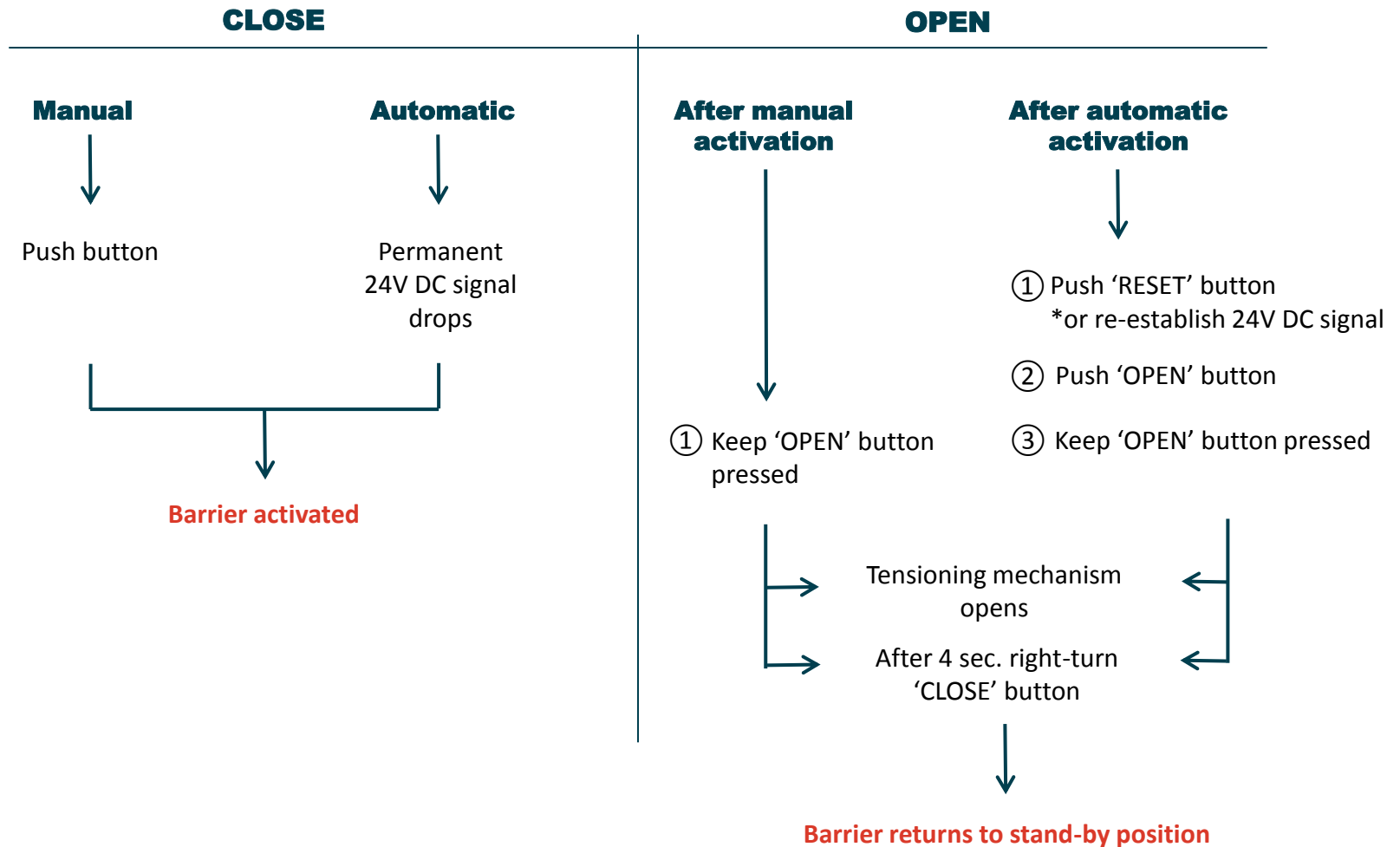
CONTROL UNIT



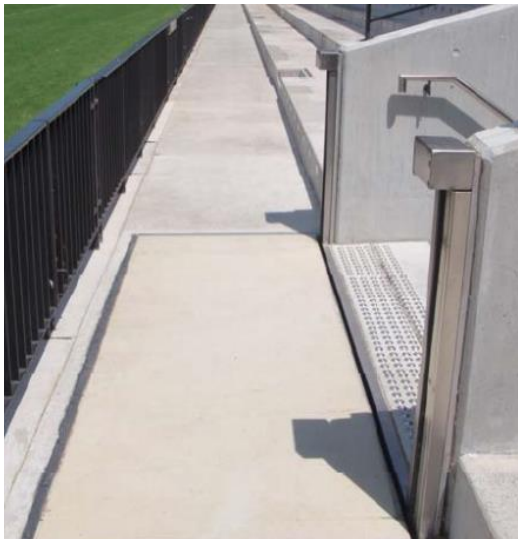
PNEUMATIC FLOOD BARRIER

TECHNICAL DATA

OPERATION



PNEUMATIC FLOOD BARRIER



AGGÈRES
Flood solutions.

AGGÈRES NV
Boomgaarddreef 9
2900 Schoten
Belgium

www.aggeres.com
info@aggeres.com
+32 3 633 15 50